

Ted George



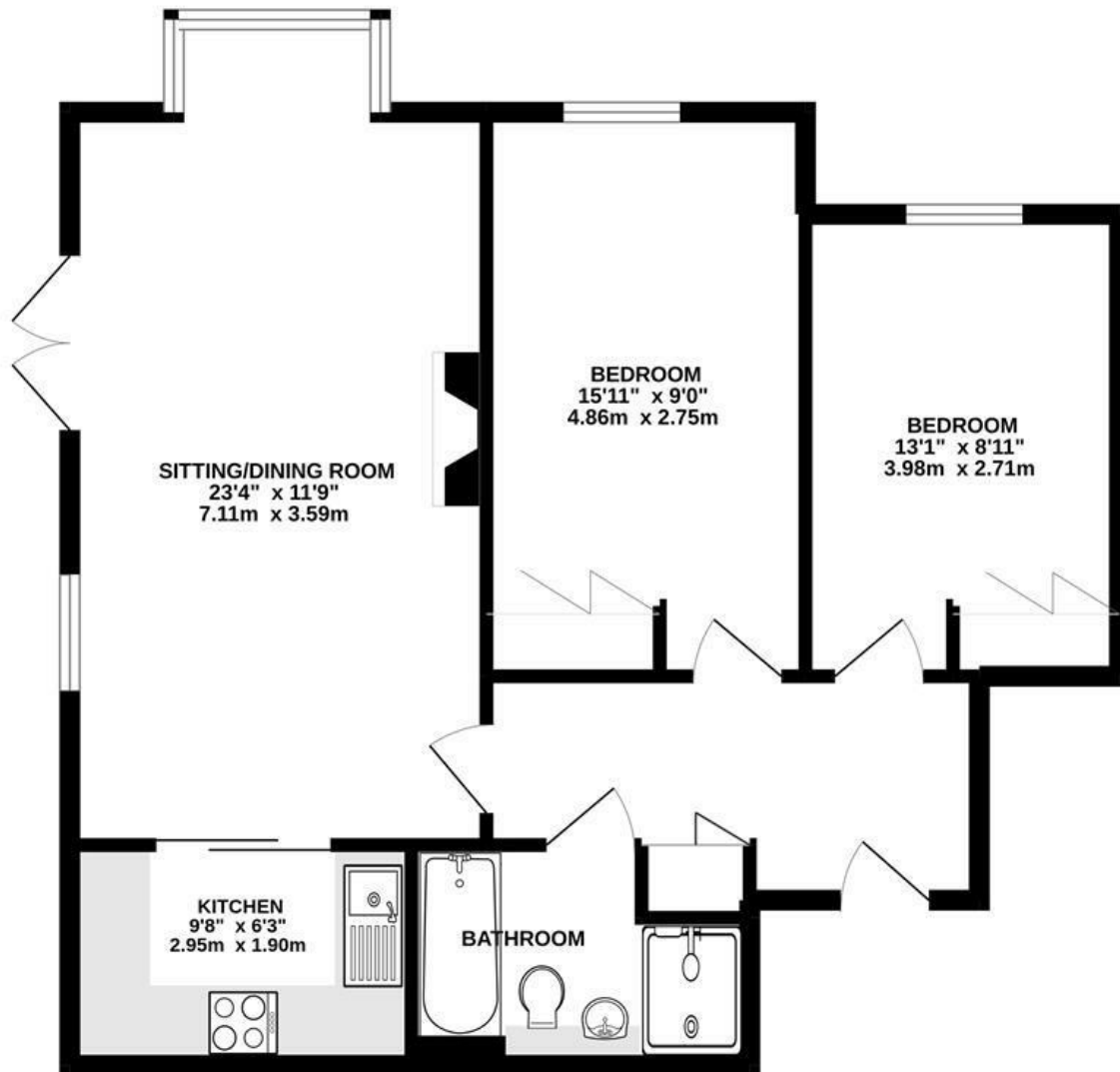
9 Prebendal Court Station Road, Shipton-Under-Wychwood, Chipping Norton, OX7 6RR

A spacious 2 bed apartment in this high quality development of 4 retirement cottages and 16 apartments within the grounds of a listed residential and nursing home.

- 2 Bedrooms
- Sitting/dining room
- Spacious Rooms
- Ground floor
- Communal gardens
- Retirement apartment
- 24 hour nurse call
- Great views

£250,000

GROUND FLOOR
708 sq.ft. (65.8 sq.m.) approx.



TOTAL FLOOR AREA: 708 sq.ft. (65.8 sq.m.) approx.

Whilst every attempt has been made to ensure the accuracy of the floorplan contained here, measurements of doors, windows, rooms and any other items are approximate and no responsibility is taken for any error, omission or mis-statement. This plan is for illustrative purposes only and should be used as such by any prospective purchaser. The services, systems and appliances shown have not been tested and no guarantee as to their operability or efficiency can be given.
Made with Metroplex ©2022

| Energy Efficiency Rating | | Current | Potential |
|---|--|-------------------------|-----------|
| Very energy efficient - lower running costs | | | |
| (92 plus) A | | | |
| (81-91) B | | | |
| (69-80) C | | | |
| (55-68) D | | | |
| (39-54) E | | | |
| (21-38) F | | | |
| (1-20) G | | | |
| Not energy efficient - higher running costs | | | |
| England & Wales | | EU Directive 2002/91/EC | |

| Environmental Impact (CO ₂) Rating | | Current | Potential |
|---|--|-------------------------|-----------|
| Very environmentally friendly - lower CO ₂ emissions | | | |
| (92 plus) A | | | |
| (81-91) B | | | |
| (69-80) C | | | |
| (55-68) D | | | |
| (39-54) E | | | |
| (21-38) F | | | |
| (1-20) G | | | |
| Not environmentally friendly - higher CO ₂ emissions | | | |
| England & Wales | | EU Directive 2002/91/EC | |